



Your Dream Home will not remain a dream

# Sai Pavitra Anogh

Beyond Luxury....



2 & 3 BHK LUXURY FLATS @ MEI EMPLOYEES HOUSING COLONY, TUMKUR ROAD, NEAR YESHWANTPUR



**AREA STATEMENT IN SQ.FTS**

UNIT-1		1360 Sq.ft		3 BHK
UNIT-2		1030 Sq.ft		2 BHK
UNIT-3		1010 Sq.ft		2 BHK
UNIT-4		1195 Sq.ft		3 BHK
UNIT-5		1140 Sq.ft		3 BHK
UNIT-6		1320 Sq.ft		3 BHK
UNIT-7		1160 Sq.ft		2 BHK
UNIT-8		1405 Sq.ft		3 BHK
UNIT-9		1075 Sq.ft		2 BHK
UNIT-10		1070 Sq.ft		2 BHK
UNIT-11		1075 Sq.ft		2 BHK
UNIT-12		1075 Sq.ft		2 BHK
UNIT-13		1415 Sq.ft		3 BHK
UNIT-14		1050 Sq.ft		2 BHK



**Commitment of Sai Pavitra Amogh**  
Every square inch of project is finished to perfection be it the materials used or the fittings and accessories, you can be rest assured of, nothing but the best to last long and give you all the lime to enjoy comfortable living.

TYPICAL FLOOR PLAN



"SAI PAVITRA AMOGH" a BBMP approved 2 & 3 BHK Residential apartment is located OFF MEI Employee Hosuing Colony, Tumkur Road, Near Yeshwanthpur, The apartment has close proximity to many well

known amenities /services like Educational Institutions, hospitals, hotels & shopping centers, making it preferable option to own a home.

"SAI PAVITRA DEVELOPERS" apartment of 4 floors, with **56** units, has built up area ranging from **1010 Sq. ft. to 1415 Sq.ft.** The skillful and crafty teamwork of Architects, Structural Engineers, landscape architects and best Construction Team ensures a quality construction for your dream home.

We Believe there are no boundaries for quality. That's why our constant pursuit is to achieve uncompromising standards in what we deliver. From quality of material and quality of finish to architectural design and added values-every detail has been given the highest care. Including vastu Compliance. So when you walk into "SAI PAVITRA DEVELOPERS" at EMI Employee Hosuing Colony, Tumkur Road, Near Yeshwanthpur. You be judge. You do the inspection. And admittedly, you'll end pleasantly surprised with all your discoveries.

#### SAI PAVITRA AMOGH class Amenities



Children's Play Area with Equipments



Swimming Pool & Toddlers Pool



Gym



Citizen Park



Intercom



2 Nos Elevators 6 Passengers



Rainwater Harvesting



Letter Box for Each Flat in stilt Floor



Covered Car Park



Power Back-up



24/7 Security

#### Sports Amenities Indoor



Carom



Jogging Track

**AT SAI PAVITRA , QUALITY AS NO FINISH LINE**

# Sai Pavitra Amogh

Beyond Luxury....



Your Dream our Passion



Sai Pavitra Developo

**UNIT-1**  
1360 Sq.ft 3 BHK  
NORTH FACE







**UNIT-3**  
1010 Sq.ft 2 BHK  
NORTH FACE



**Specifications**

-  **STRUCTURE**  
R.C.C Frame structure and solid concrete block walls.
-  **MASONRY**  
Solid Blocks for walls, external 6" and Internal 4" thick.
-  **FLOORING**  
Vitrified flooring for the entire flat.
-  **COMMON AREAS / STAIRCASE**  
Granite Flooring.
-  **WINDOWS**  
3 Track aluminium windows, with Safety Grills.

-  **DOORS**  
Main Door of Teak wood frame with Teak wood door, All other doors of Sal wood frame with OST doors.
-  **KITCHEN**  
Vitrified flooring and glazed ceramic tiles in walls upto 2'0" height above 30 mm thick granite counter in the kitchen with SS sink.
-  **TOILET / BATH**  
Sanitary fittings of HINDWARE. ISI Jaguar Continental Series CP fittings for the end fittings, Anti-skid tiles in flooring & glazed tiles up to 7'0" height,
-  **ELECTRICAL**  
Concealed electrical wiring of ISI make & provision of adequate light points. Television and Telephone point in living room and Master Bedroom, and intercom facility.

-  **PAINTING**  
Interior walls painted with Tractor Emulsion and exterior walls with water proof emulsion of ACE quality.
-  **WATER SUPPLY**  
24 hours water supply from Bore well, Overhead tank & Sump
-  **LIFT**  
6 Passengers Automatic standard make Lift with Jonson
-  **INTERIOR**  
Interior as per client choice at extra cost.





UNIT-1 | 1360 Sq.ft | 3 BHK



UNIT-2 | 1030 Sq.ft | 2 BHK



UNIT-3 | 1010 Sq.ft | 2 BHK



UNIT-4 | 1195 Sq.ft | 3 BHK



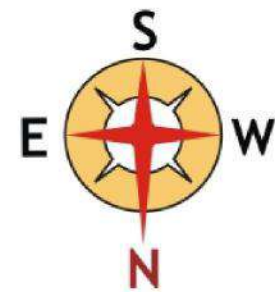
UNIT-5 | 1140 Sq.ft | 3 BHK



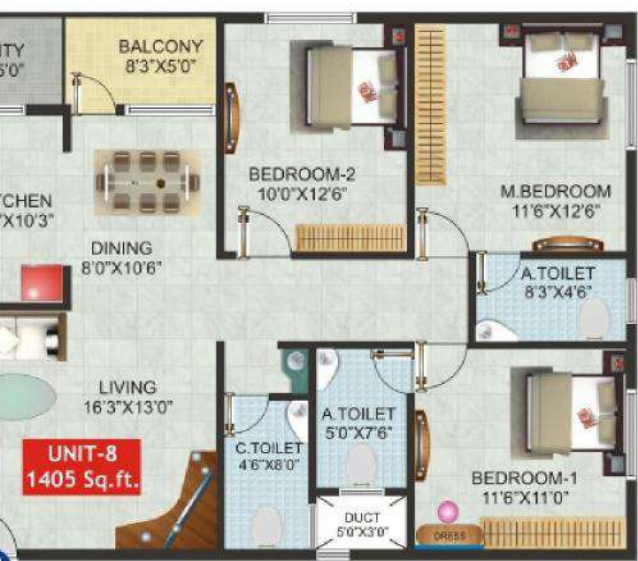
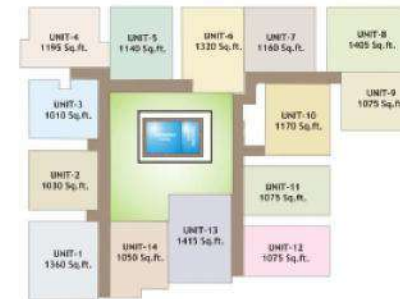
UNIT-6 | 1320 Sq.ft | 3 BHK



UNIT-7 | 1160 Sq.ft | 2 BHK



INDV. FLOOR PLANS



UNIT-8 | 1405 Sq.ft | 3 BHK



UNIT-9 | 1075 Sq.ft | 2 BHK



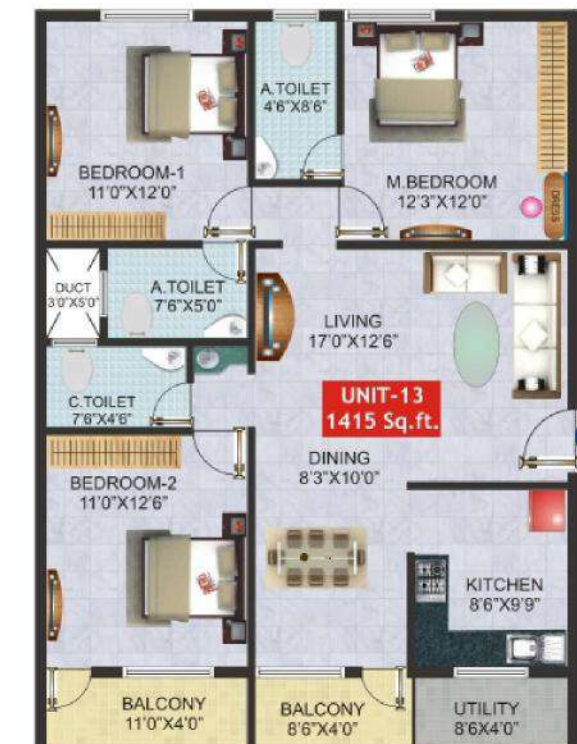
UNIT-10 | 1070 Sq.ft | 2 BHK



UNIT-11 | 1075 Sq.ft | 2 BHK



UNIT-12 | 1075 Sq.ft | 2 BHK



UNIT-13 | 1415 Sq.ft | 3 BHK



UNIT-14 | 1050 Sq.ft | 2 BHK

## HOW TO REACH OUR PROJECT



## CAR PARKING



**Location Advantage**

**Know your neighborhood**

- Hessarghatta Metro Station - 0.5 Km.
- Jahahalli Cross - 2 Kms
- International Airport - 35 Kms.
- Yeshwanthpur Railway Station - 7 kms.
- Chikkabanavara Railway Station - 1 km.



Promoted By:  
**Sai Pavitra Developers**



Loan's arranged from leading Financial Institutions

This brochure is purely conceptual and is not legal offering. The promoters/architects reserve the right to add/delete/alter any details/specification elevation mentioned herein.

# Sai Pavitra Amogh

Beyond Luxury...

Your Dream Home is with you Now



Sai Pavitra Developers

