



2 & 3 BHK LUXURIOUS RESIDENTIAL APARTMENT
@ RAJARAJESHWARI NAGAR, BEML LAYOUT



Karishma
Crystal
your space | your lifestyle

*Built Around you, Come
discover the most beautiful
Place to live...*



A Saga Scripted to look grandiose at
Karishma Crystal


Karishma
Crystal
your space | your lifestyle



Standards that complement the elite life...

When we experience the best of being surrounding with magnificence.

Our senses respond to the beautiful and elegant masterpieces of nature.

Coming home to the nativity is an indescribable accomplishment we yearn for.



As Per
Vasthu





Karishma
Crystal
your space | your lifestyle



GROUND FLOOR PLAN

TYPICAL FLOOR PLAN



Karishma
Crystal
your space | your lifestyle



When the world passes by your home, wouldn't you want it to admire it and let you feel really on top. The aesthetics of the entire property and the facade of the building are designed to evoke a feeling of pride in you, and quite possibly, a feeling of envy in others. Because when you're living in a home made by us, we would simply want you to feel proud about it. So whether the sun is out in its full glow, or whether the sun has faded away to welcome the night, Karishma Crystal is designed to look more gorgeous than your imagination



The View is Unlike
Anything Common...



Feel the Richness life of world in
Karishma Crystal

"KARISHMA CRYSTAL" A BBMP approved 2 & 3 BHK luxury residential apartment is conveniently located in Rajarajeshwari Nagar BEML Layout. "KARISHMA CRYSTAL" is perfectly located, the accessibility and the Proximity to leading Schools, Colleges, Hospitals and Shopping Centers ensures that it is always a premium property in all respect.

The design is undertaken by skillful team of Architects and Engineers, and the construction has been retained in-house so as to ensure quality construction of your dream home. "KARISHMA CRYSTAL" has only 6 Units in each floor having the built up area measuring 1135 Sft to 1570 Sft. The units are designed to ensure proper lighting and ventilation and not compromising on Vasthu Compliance

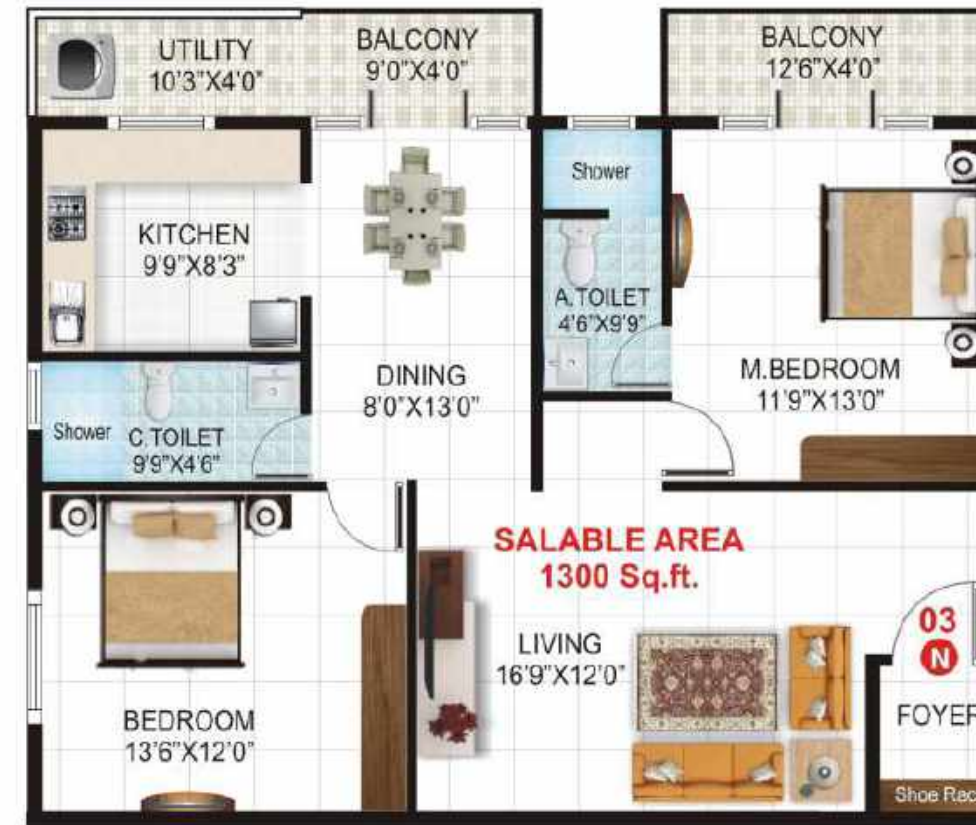
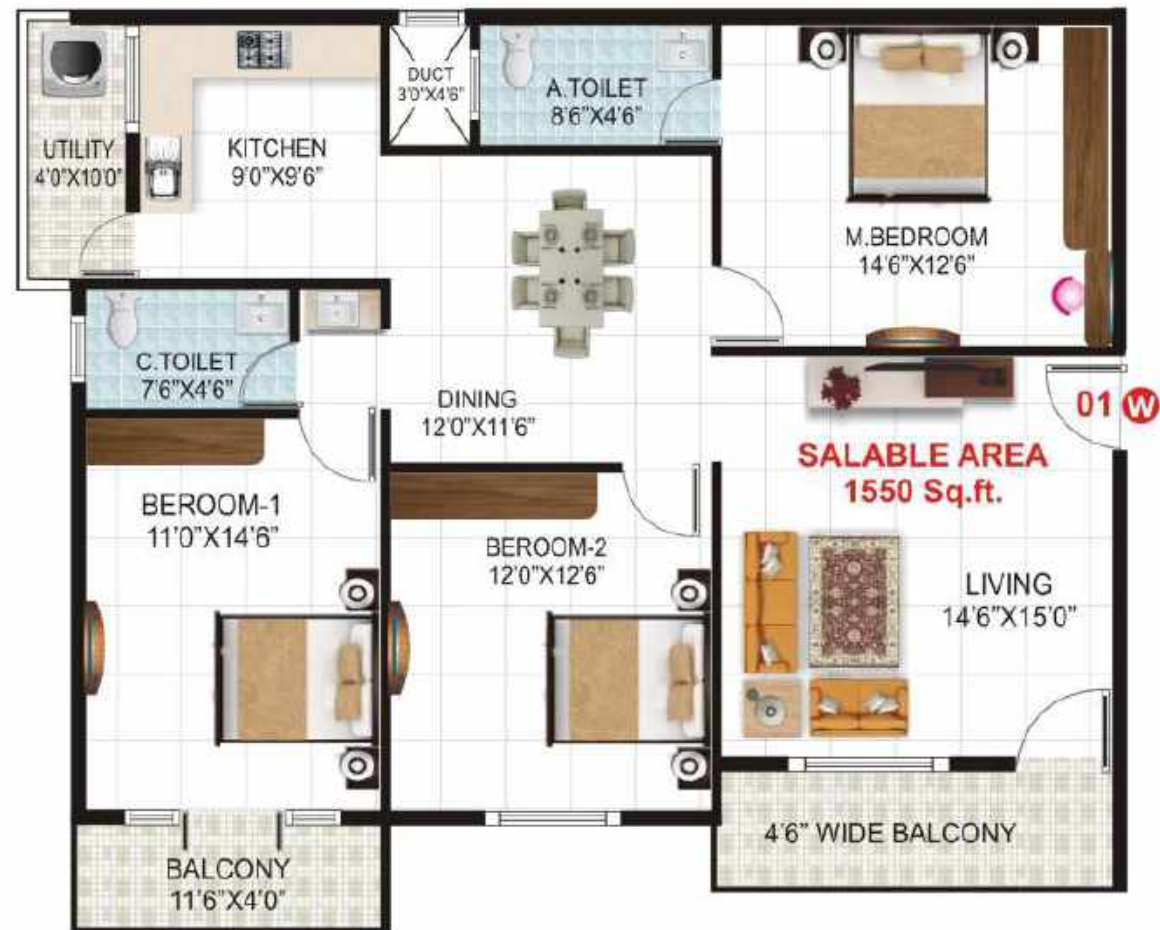
It is the spirit of excellence and uncompromising passion that fuels and also defines the fountainhead of Life, Then finds its own inspiration for creating happiest moments. **Karishma Infrastructure** has always strived to achieve excellence in the field of construction. It is our continuous effort to ensure complete satisfaction of our clients. We deliver utmost satisfaction by maintaining quality and completing the projects as per the promised schedule, and believed in win-win strategy. Owning an apartment at "KARISHMA CRYSTAL" promises not just an outstanding living but also a worthy investment option for your future.



KARISHMA CRYSTAL

ಕರಿಷ್ಮಾ ಕ್ರಿಸ್ಟಲ್





TYPICAL FLOOR PLAN



ARCHITECTURAL / CIVIL SPECIFICATIONS
24 Units Exclusively Designed 2 & 3 Bedroom Apartment.

GROUND FLOOR PLAN AREA STATEMENT IN SQ.FTS

UNIT NO.	01	02	03	04	05	06
TYPE	3 BHK	2 BHK	2 BHK	3 BHK	2 BHK	2 BHK
AREA	1550 sq.ft.	1180 sq.ft.	1300 sq.ft.	1570 sq.ft.	1255 sq.ft.	1135 sq.ft.
FACING	WEST	WEST	NORTH	EAST	EAST	EAST

TYPICAL FLOOR PLAN AREA STATEMENT IN SQ.FTS

UNIT NO.	01	02	03	04	05	06
TYPE	3 BHK	2 BHK	2 BHK	3 BHK	2 BHK	3 BHK
AREA	1550 sq.ft.	1180 sq.ft.	1300 sq.ft.	1570 sq.ft.	1255 sq.ft.	1400 sq.ft.
FACING	WEST	WEST	NORTH	EAST	EAST	EAST

Karishma Crystal
your space | your lifestyle



KEY PLAN





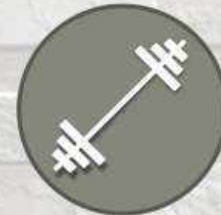
Best in Class Amenities



MULTI-PURPOSE HALL



JOGGING TRACK



GYM



RAIN WATER HARVESTING



CCTV CAMERA



ROOF GARDEN



GAS LINE CONNECTION



24 HRS WATER SUPPLY



24 HRS HOT WATER



FUJITEC OR JOHNSON AUTOMATIC ELEVATOR 6 PASSENGERS



INTERCOM FACILITY



COVERED CAR PARKING

TYPICAL FLOOR PLAN



2 BHK 3d View

Flat No. 03 (North Facing)

1300 Sq.ft



Karishma Crystal is a project of Karishma Infrastructure - a team with the vision and imagination it takes to create a project that answers every modern requirement while maintaining a holistic way of life. United signature of success is handpicked locations, honest pricing, on time delivery & quality second to none.

Karishma Crystal
your space | your lifestyle



3 BHK 3d View

Flat No. 04 (East Facing)

1570 Sq.ft





High living life is discovered in Karishma Crystal

Everything spells high living. With a brilliant location at Central Heart of Rajarajeshwari Nagar, BEML Layout, one of the most coveted residential place in the city. Premium malls, entertainment hubs and International Educational Institutions are all within easy reach. In short, you have the world around you.

LOCATED @ CENTRAL HEART OF RAJARAJESHWARI NAGAR

Location Advantage

Proximity

- 1.5 km from
Rajarajeshwari Temple
- 3 km from
Mysore Road Junction
- Close to Shakti Resorts

Super Markets

- Gopalan Mall

Hospitals

- BGS Global Hospitals
- SS Hospitals

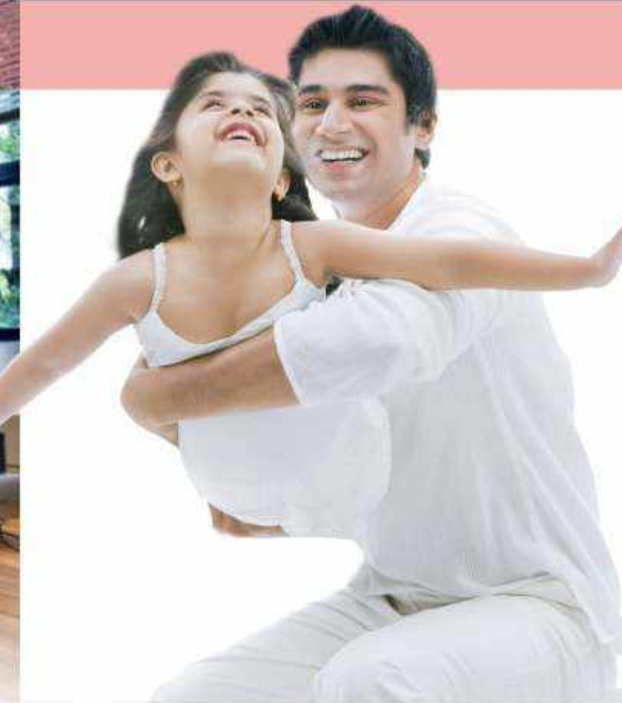
Educational Inst.

- Jnanakshi school
 - RNS IT Institutions
 - National Hill View Public School
 - Swargarani School
 - Global Engineering College
 - JSS College
 - Mount Carmel School
 - BGS School
 - Baldwin School,
- ##### IT Park
- Global Village & Much more...





GYM WITH WELL EQUIPMENTS ON TERRACE



SPECIFICATIONS

STRUCTURE:

RCC Frame work designed as per IS code.

WALLS :

6" thick cement solid block for exterior Walls and 4" thick cement solid block for internal walls.

FLOORING :

Wooden Finish Vitrified Tiles for Master Bedroom, Vitrified Tiles for Living, Dining Hall and Bedrooms, Anti Skid Ceramic Tiles for Balcony, Bathrooms & Utility

KITCHEN:

Naturao Quanto Kitchen sink on granite platform 3' Height Daddo above platform, power point provision for drinking water purifier, refrigerator, cooking range and exhaust fans.

PAINTING:

Emulsion oil bound distemper paint for all internal walls surface and ceiling, Premium quality Exterior paint for external wall surface.

PLASTERING :

Internal cement mortar with lime rendering, External with sponge finish.

ELECTRICAL :

Concealed copper wiring with adequate light points with T.V / Telephone Internet Points in living and Master Bedroom of ISI Make.



DOORS :

Main Door : Teak wood Frame with Teak wood Doors. All other Doors of Teak wood frame with BST & OST Shutters. SSP Fittings.

WINDOWS:

Teak wood frame with Teak wood Shutters.

COMMON AREAS:

Granite flooring for all common areas.



TOILETS:

Premium wall tiles up to 8ft height, wall mounted Commode & wash basin in all toilets of Parryware / Hindware. Diverters type Taps for all toilets from Jaquar / Hindware make, one geyser point shall be provided in each toilet

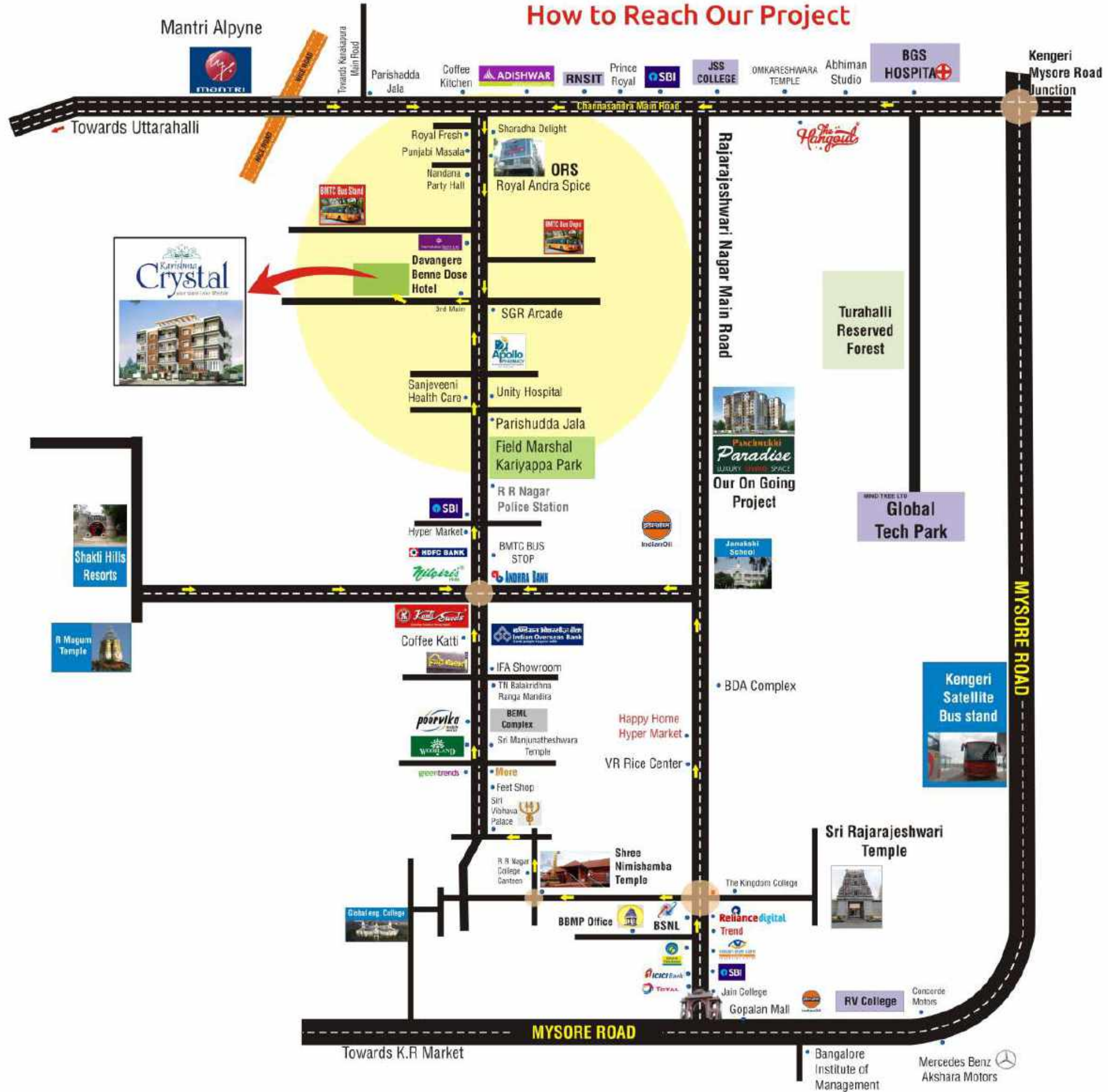
WATER SUPPLY :

24 hours water supply from bore well with overhead tank and sump provision for Cauvery water supply.

LIFT :

Fujitec or Johnson Automatic Elevator.

How to Reach Our Project



The Lifestyle with a Difference...

your space | your lifestyle



2 & 3 Bedroom Luxurious Apartment @ Rajarajeshwari Nagar, BEML Layout

Project by:



Project Address

No. 1229/2, Karishma Crystal, 3rd Main Road,
BEML 5th Stage, Jawaharlal Nehru Road,
Near by BMTc Bus Depot Rajarajeshwari Nagar,
Bengaluru -560 098.

Office Address

No.144, 5th Main, 5th Stage,
Vishwabharathi Housing Layout,
Sachidanand Nagar, Halagevaderahalli,
60 feet Road, Near SGS Cars,
Rajarajeshwari Nagar, Bengaluru -560 098.

Contact for Booking



Mr. Jaswan chowdary

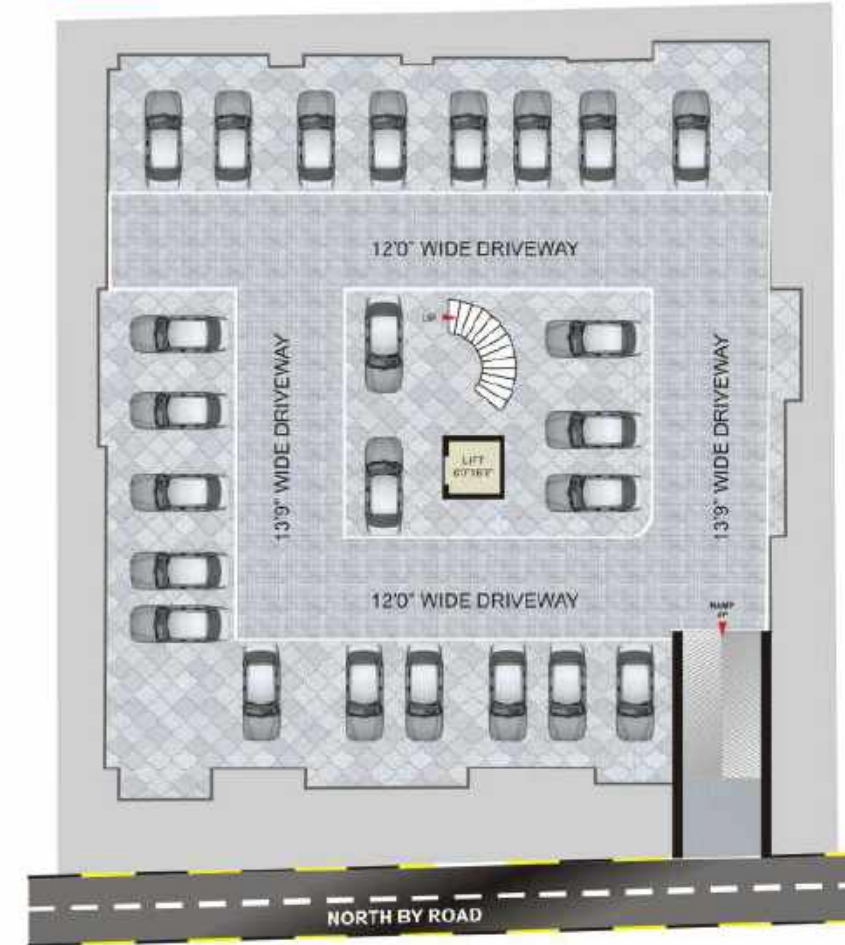
+91 80504 66466

Email : Info@eliteresidencies.com

website : www.eliteresidencies.com



CAR PARKING FLOOR PLAN



Design & Print Srishti Communication 9980667039